

# UIUC Dialup and Windows 98

## 1 Quick start

This page provides a simple step-by-step overview of the dialup configuration process. (The rest of the packet is a more detailed explanation with screen shots.)

1. Go to **Start -> Programs -> Accessories -> Communications -> Network and Dial-up Connections**.
2. Double-click on **Make New Connection**. This produces the New Connection Wizard.  
Click **Next**.
3. Name your connection **UIUCnet Premier** (or UIUCnet Dialup).  
Click **Next**.
4. Enter **217** in the area code field.  
If you're using **UIUCnet Premier**, enter **239-7252**.  
If you're using **UIUCnet Dialup**, enter **333-3700**.  
(If you're calling from on campus, add a 9 before the telephone number.)  
Select **United States of America (1)** in the country or region code field.  
Click **Next**.
5. You're now finished with the dialup wizard. Click **Finish**.

### 1.1 Dialing in

To connect to the network, make sure your modem's phone cable is connected at both ends, then double-click on the UIUCnet Premier (or UIUCnet Dialup) icon in the Network and Dial-up Connections window. A connection window will appear.

Enter your Network ID password and click **Connect**.

When you're finished using your dialup connection, right-click on the network icon (two computer screens) in the task bar and select **Disconnect**.

## 2 What you'll need to know

Some things you'll need to know to configure your Windows 98 machine to connect to UIUCnet Dialup include:

- **Has your modem been installed yet?**

Under **Start -> Settings -> Control Panel**, click on the **Modems** icon. If you don't see your modem listed, visit the web page:

<http://www.cites.uiuc.edu/dialup/win-newmodem.html>

If you cannot access the Internet at the moment, this information is also available as a handout called "Installing a new modem (Windows)" from:

CITES Help Desk  
1211 DCL, 1304 W. Springfield  
Urbana, IL 61801

Hours: 8:30 AM to 5 PM Central Standard Time

Phone: (217) 244-7000

Toll-free: 800-531-2531

Email: [consult@uiuc.edu](mailto:consult@uiuc.edu)

## 3 Dialup phone numbers

The following numbers are used for dialup access to the campus network:

Speed	Access	Phone number
56Kb/s V.90/Kflex	Premier subscribers only	239-7252
56Kb/s V.90/Kflex	available to all authorized users	333-3700
56Kb/s V.90/Kflex	available to all authorized users, limit of 15 minutes per call	244-4976

(If you're calling from on campus, add a 9 before the telephone number.)

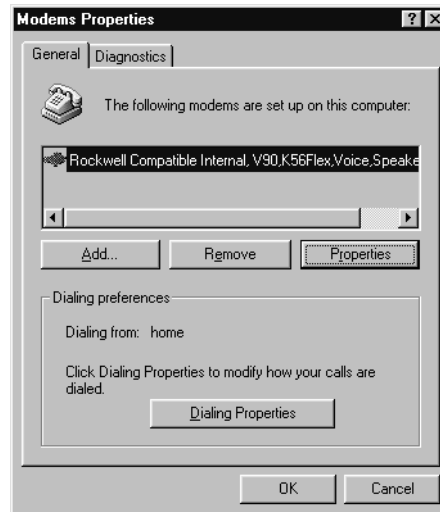
If all the restricted-use phone lines are busy, they will automatically redirect into the 333-3700 (all users) pool. If all 333-3700 lines are also busy, you will receive a busy signal.

The exception is the Premier service, which is guaranteed not to have busy signals. If you receive a busy signal from the Premier line, contact the Operations Center. The Operations Center can be reached by calling (217) 244-1000 or by emailing [net-trouble@uiuc.edu](mailto:net-trouble@uiuc.edu).

## 4 Configuring Windows 98 to connect to UIUCnet Dialup services

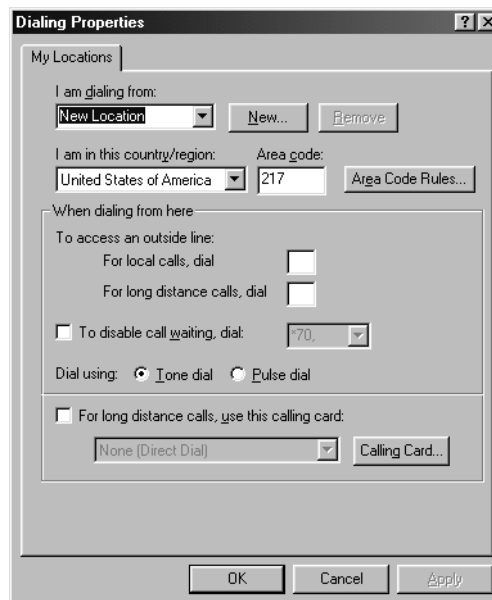
### 4.1 Configuring your location information

From the **Start** menu, select **Settings**, then **Control Panel**. In the window which appears, double-click the **Modems** button. You should see a window like this:



(If there is no modem installed, see the “What you’ll need to know” section at the top of this document for directions on where to find modem installation assistance.)

In the window shown above, click the **Dialing Properties** button. This produces a window like the following. (Although the layout may vary slightly, the information requested is the same.)



#### Local and long-distance calls:

Define the location from which you will dial up most often. For many people, this location will be Champaign-Urbana, so the area code information will not be necessary. However, some people

may dial up most often from outside the 217 area code; those people should make sure their home area code is displayed in the area code box.

If you are dialing in from an on-campus (office or residence hall) phone, you'll need to enter **9**, (9 and a comma) in the "For local calls, dial" box. Otherwise, the modem will get through the first five numbers of the phone number and the UIUC phone system will handle it as an on-campus extension and either return an error or ring through to the person who has that five-number extension. Dialing 9 first will make sure you can dial all the numbers of the modem lines (and any disabling-call-waiting codes necessary from your location).

### Call waiting:

Call waiting may or may not be enabled on the phone from which you are calling. See your telephone provider's service contract for details. However, if call waiting is enabled on your phone, you should temporarily disable it while you are online. Otherwise, an incoming call can cause problems for your network connection.

### Calling cards:

For more information on using dialup with calling cards, see the Calling Cards page at <http://www.cites.uiuc.edu/dialup/callingcard.html>

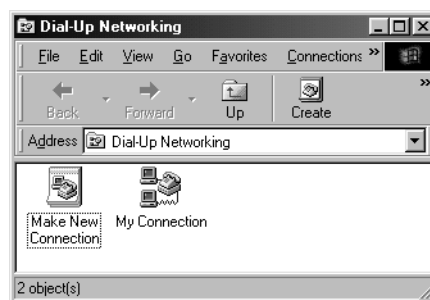
After you've entered your location information here, click **OK**. You will return to the Modems Properties page. Click **OK** again. You should be back at the desktop.

## 4.2 Configuring a dialup entry

Next, you'll create a dialup connection and configure it.

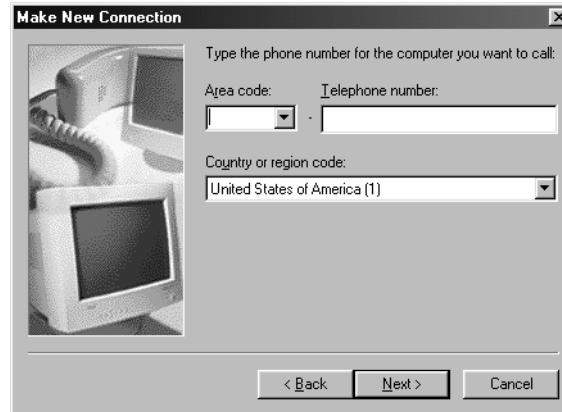
- For **Windows 95**, from the Start Button select Programs -> Accessories -> Dial-Up Networking
- For **Windows 98**, from the Start Button select Programs -> Accessories -> Communications -> Dial-Up Networking

You should see a window like this (with or without the My Connection icon):



Double-click the **Make New Connection** icon. This produces a **New Connection** window. You can either accept the default connection name or rename it; then click **Next**.

The second New Connection screen looks like this:



Enter 217 in the area code field if you are dialing from outside the 217 area code.

Put your preferred phone number from the dialup phone numbers in the telephone number field. (Remember that any user-restricted lines will switch over to the main line if the restricted lines are all busy.)

Speed	Access	Phone number
56Kb/s V.90/Kflex	Premier subscribers only	239-7252
56Kb/s V.90/Kflex	available to all authorized users	333-3700
56Kb/s V.90/Kflex	available to all authorized users, limit of 15 minutes per call	244-4976

333-3700 is the general line which is available to all UIUC users, but if you qualify for one of the more limited access lines, you may want to use that number first.

Also, if you usually dial from a location which needs an initial 9 to connect to an external phone line (such as an office, dorm, or hotel), add **9**, to the beginning of your phone number (for example, 9,333-3700).

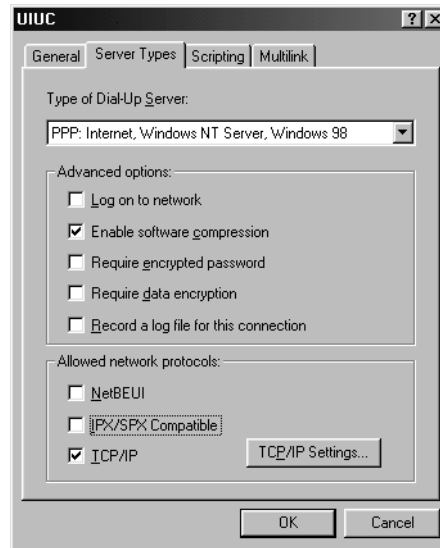
Click **Next**, then **Finish**.

### 4.3 Assigning DNS server information to your new connection

*Note: In most cases, you shouldn't need to manually assign the DNS server addresses; your computer should automatically detect them.* For that reason, this step was not documented in the short version. However, if you've experienced problems connecting with the quick configuration, you can add the following information to your dialup configuration.

There will be a new dialup icon in the Dial-Up Networking window. *Right-click* (click with the right mouse button) on the icon, and select **Properties** from the menu which appears.

You will see a window like the following, although the General tab may be displayed first and you may or may not have a Multilink tab in the window you see. If you click on the **Server Types** tab, these options will be available:



The type of dialup server should be **PPP**.

Only two check boxes should be checked:

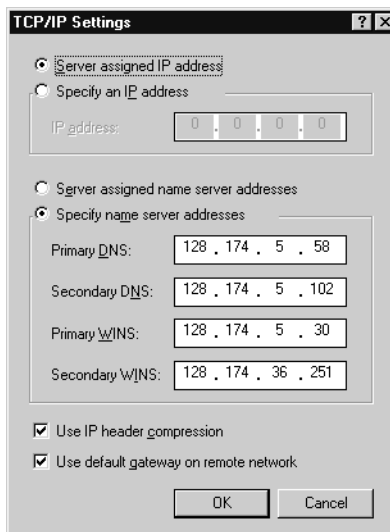
**Enable Software Compression**

and

**TCP/IP**.

If any other check boxes are selected, un-select them.

Next, click the **TCP/IP Settings** button. This produces a window like the following:



You can also obtain the **DNS server information** automatically if you wish. If so, make sure "Server assigned name server" is selected, click OK until you return to the desktop, and skip down to "Starting a session" below.

However, since the DNS information does not bring the WINS information with it automatically, and you may wish to specify WINS information to connect to Windows Network Neighborhood Resources, you can also provide DNS and WINS information as follows:

- Select **Server-assigned IP address**
- Select **Specify name server addresses**
- Select **Use IP header compression**
- Select **Use default gateway on remote network**
- Use the **DNS and WINS server IP addresses** given below.

DNS server IP address	DNS server description
128.174.5.58	Primary DNS server for campus
128.174.5.102	Secondary DNS server for campus

WINS server IP address	WINS server description
128.174.5.30	Primary WINS server for campus
128.174.5.31	Secondary WINS server for campus

Once you've configured the DNS servers (and the WINS servers if you want to use them), click **OK**. You'll return to the main Properties window; click **OK** again.

If you want to have a dialup shortcut on your desktop, you can drag and drop the dialup icon you created from the Dial-Up Networking window to your desktop.

You're now finished with the initial configuration.

## 4.4 Starting a dialup session

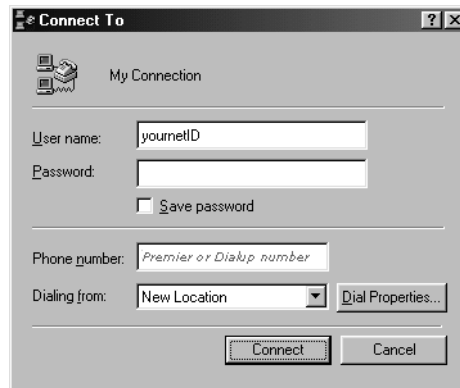
After you've done the initial configuration, connection is a simple process:

Plug a phone line into your modem and into an analog phone jack in the wall.

If you created a shortcut on the desktop, double-click the shortcut. Otherwise:

- For **Windows 95**, from the **Start** button select **Programs -> Accessories -> Dial-Up Networking**. Then, in the window that appears, double-click your connection icon.
- For **Windows 98**, from the **Start** button select **Programs -> Accessories -> Communications -> Dial-Up Networking**. Then, in the window that appears, double-click your connection icon.

A window like the following will appear:

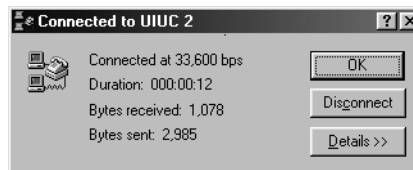


- **User name:** Give your Network ID.  
If you don't know your Network ID, it's identified as "Net ID" on your UIUC Identification Card (I-card). You can also see <http://www.cites.uiuc.edu/netid/> for more information.
- **Password:** Give your network ID password.

Do NOT check "save password."

Click the **Connect** button.

You will see a window reporting on the progress of the attempts to make a connection. If you connect successfully, you will see a window like the following:



If you click OK, a small network icon (two computers) will appear in the lower right area of your screen, in the task bar. Whenever their screens light up, information is being transmitted over the active connection. At this point, you can check email or web-browse.

When you've finished with your networking session, click the network icon (two computers). It will open a networking details window in the middle of the screen. You can choose to disconnect from here.

## 5 Windows 98 troubleshooting

If you want to use a calling card with your Windows 98 machine and a dialup connection, see Calling Cards and UIUC Dialup at

<http://www.cites.uiuc.edu/dialup/callingcard.html>

For more modem troubleshooting information, check the Dial-up Troubleshooting page at <http://www.cites.uiuc.edu/dialup/troubleshooting.html>

In addition, you can contact the CITES Help Desk at the hours and times given on the first page of this document. For additional Web-based help, the Help Desk's URL is:

<http://www.cites.uiuc.edu/help/>